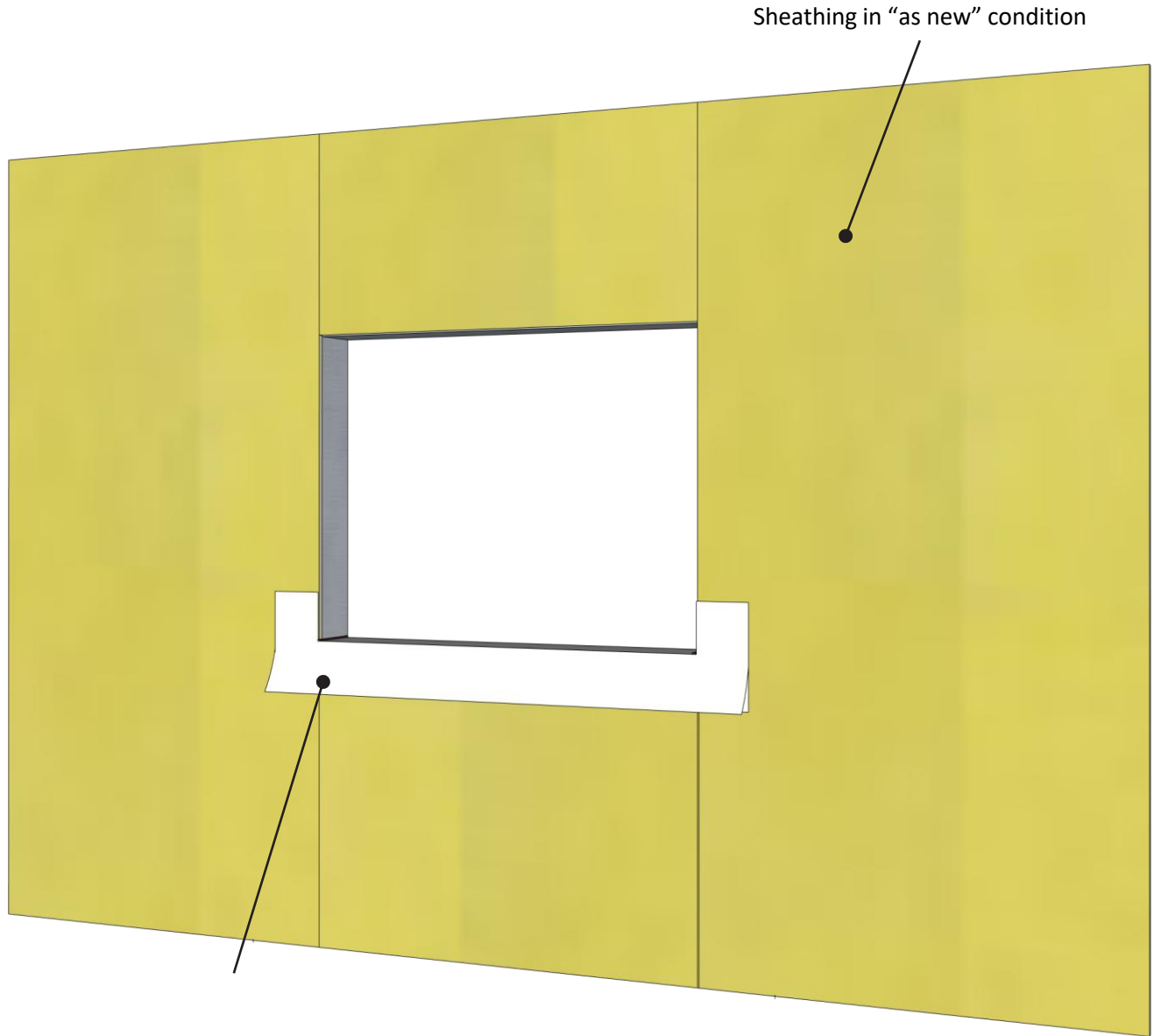


# Step 1: Commercial Window RO Flashing System



VaproFlashing SA Self-Adhered properly shingled; applied directly to sheathing + folded 6" inside of R.O.

**Note:** Total of 12" of flashing should be used:

- 6" of flashing should be left on the face of the sheathing
- 6" of release film from the bottom of the flashing to be left attached for shingling over membrane.

**PANELSHIELD**<sup>™</sup> SA

**VAPROFLASHING** SA<sup>™</sup>

#### PRODUCT DESCRIPTION

**PanelShield SA** is a vapor permeable, self-adhered water resistive barrier membrane that protects the building envelope by allowing vapor to pass through (breathable) but not air or liquid water

**VaproFlashing SA** is an air, water, and vapor barrier flashing with an aggressive pressure sensitive adhesive that does not require a primer

#### DISCLAIMER

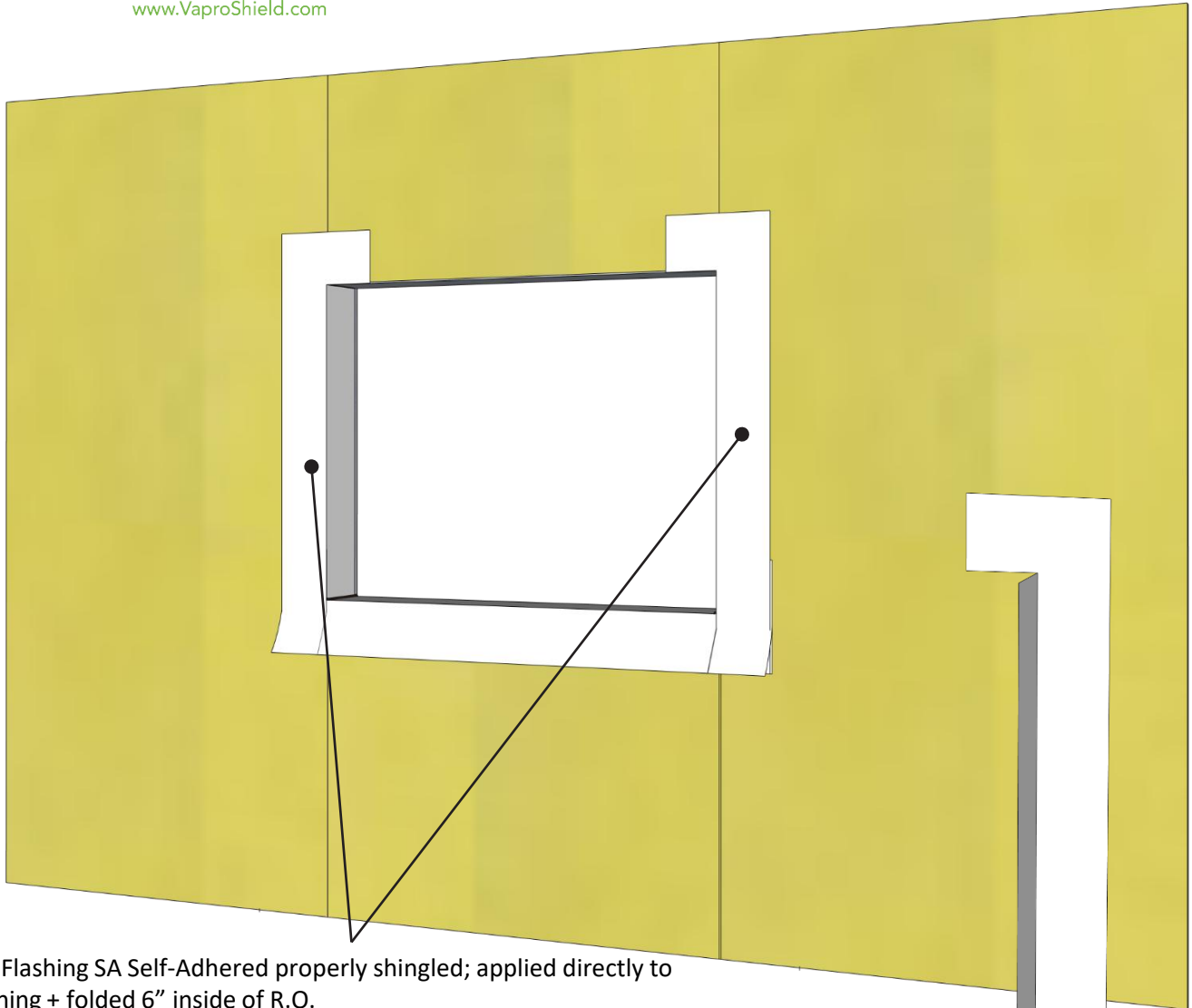
Detail sketch is generic, representing suggested best practices for VaproShield materials, and does not represent a specific job site condition and therefore may not be applicable to certain projects. Detail sketch is designed for use as a reference and must be approved by the designer/ consultant of record for each project prior to installation by the subcontractor. Changes and approvals of VaproShield details are the sole responsibility of the designer/consultant of record. VaproShield is **not** the designer of record for building enclosure details and takes no responsibility for the accuracy or interpretation of actual project site conditions.

DRAWN BY: AR

DATE: 3/2025

REF: 344

Always check [www.VaproShield.com](http://www.VaproShield.com) for the latest details and installation instructions



VaproFlashing SA Self-Adhered properly shingled; applied directly to sheathing + folded 6" inside of R.O.

**Note:** Total of 12" of flashing should be used:

- 6" of flashing should be left on the face of the sheathing
- 6" of release film from the bottom of the flashing to be left attached for shingling over membrane.

**Note:** bottom horizontal flaps of flashing can be trimmed off

**PANELSHIELD**<sup>™</sup> SA

**VAPROFLASHING** SA<sup>™</sup>

**PRODUCT DESCRIPTION**

**PanelShield SA** is a vapor permeable, self-adhered water resistive barrier membrane that protects the building envelope by allowing vapor to pass through (breathable) but not air or liquid water

**VaproFlashing SA** is an air, water, and vapor barrier flashing with an aggressive pressure sensitive adhesive that does not require a primer

**DISCLAIMER**

Detail sketch is generic, representing suggested best practices for VaproShield materials, and does not represent a specific job site condition and therefore may not be applicable to certain projects. Detail sketch is designed for use as a reference and must be approved by the designer/consultant of record for each project prior to installation by the subcontractor. Changes and approvals of VaproShield details are the sole responsibility of the designer/consultant of record. VaproShield is **not** the designer of record for building enclosure details and takes no responsibility for the accuracy or interpretation of actual project site conditions.

DRAWN BY: AR

DATE: 3/2025

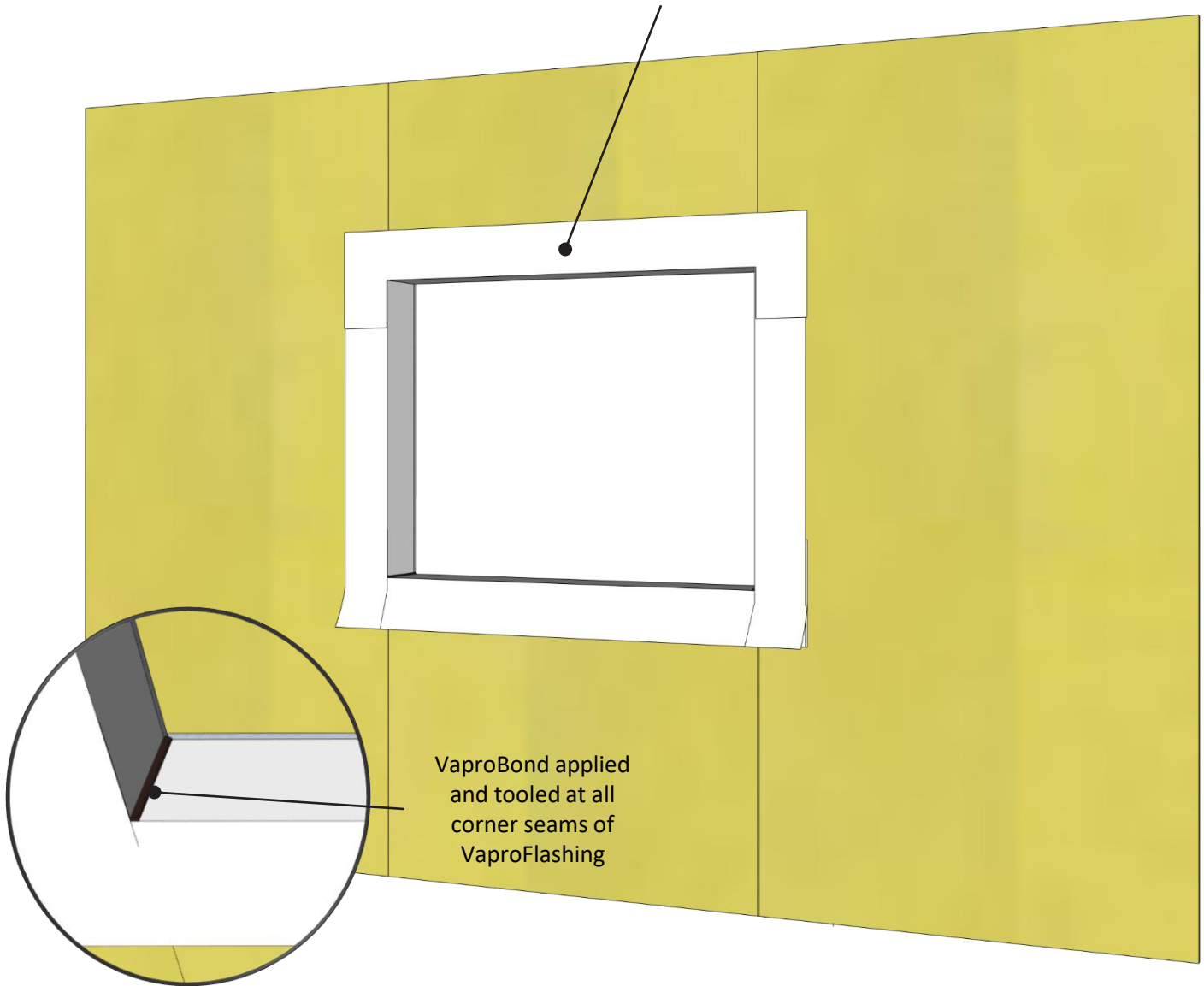
REF: 344

Always check [www.VaproShield.com](http://www.VaproShield.com) for the latest details and installation instructions

VaproFlashing SA Self-Adhered properly shingled; applied directly to sheathing + folded 6" inside of R.O.

**Note:** Total of 12" of flashing should be used:

- 6" of flashing should be left on the face of the sheathing



**PANELSHIELD**<sup>™</sup> SA

**VAPROFLASHING** SA<sup>™</sup>

**PRODUCT DESCRIPTION**

**PanelShield SA** is a vapor permeable, self-adhered water resistive barrier membrane that protects the building envelope by allowing vapor to pass through (breathable) but not air or liquid water

**VaproFlashing SA** is an air, water, and vapor barrier flashing with an aggressive pressure sensitive adhesive that does not require a primer

**DISCLAIMER**

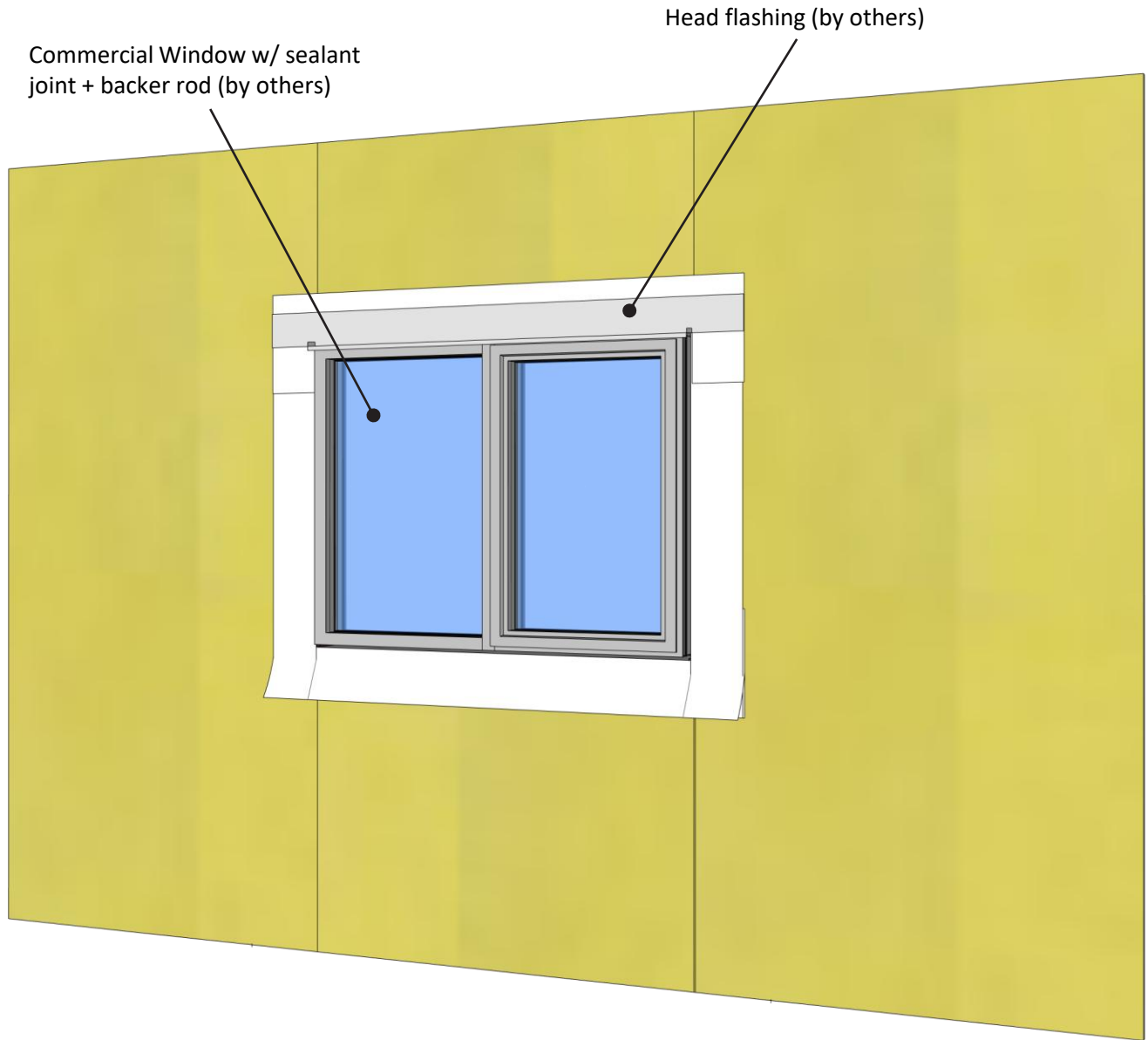
Detail sketch is generic, representing suggested best practices for VaproShield materials, and does not represent a specific job site condition and therefore may not be applicable to certain projects. Detail sketch is designed for use as a reference and must be approved by the designer/ consultant of record for each project prior to installation by the subcontractor. Changes and approvals of VaproShield details are the sole responsibility of the designer/consultant of record. VaproShield is **not** the designer of record for building enclosure details and takes no responsibility for the accuracy or interpretation of actual project site conditions.

DRAWN BY: AR

DATE: 3/2025

REF: 344

Always check [www.VaproShield.com](http://www.VaproShield.com) for the latest details and installation instructions



**PANELSHIELD**<sup>™</sup> SA

**VAPROFLASHING** SA<sup>™</sup>

**PRODUCT DESCRIPTION**

**PanelShield SA** is a vapor permeable, self-adhered water resistive barrier membrane that protects the building envelope by allowing vapor to pass through (breathable) but not air or liquid water

**VaproFlashing SA** is an air, water, and vapor barrier flashing with an aggressive pressure sensitive adhesive that does not require a primer

**DISCLAIMER**

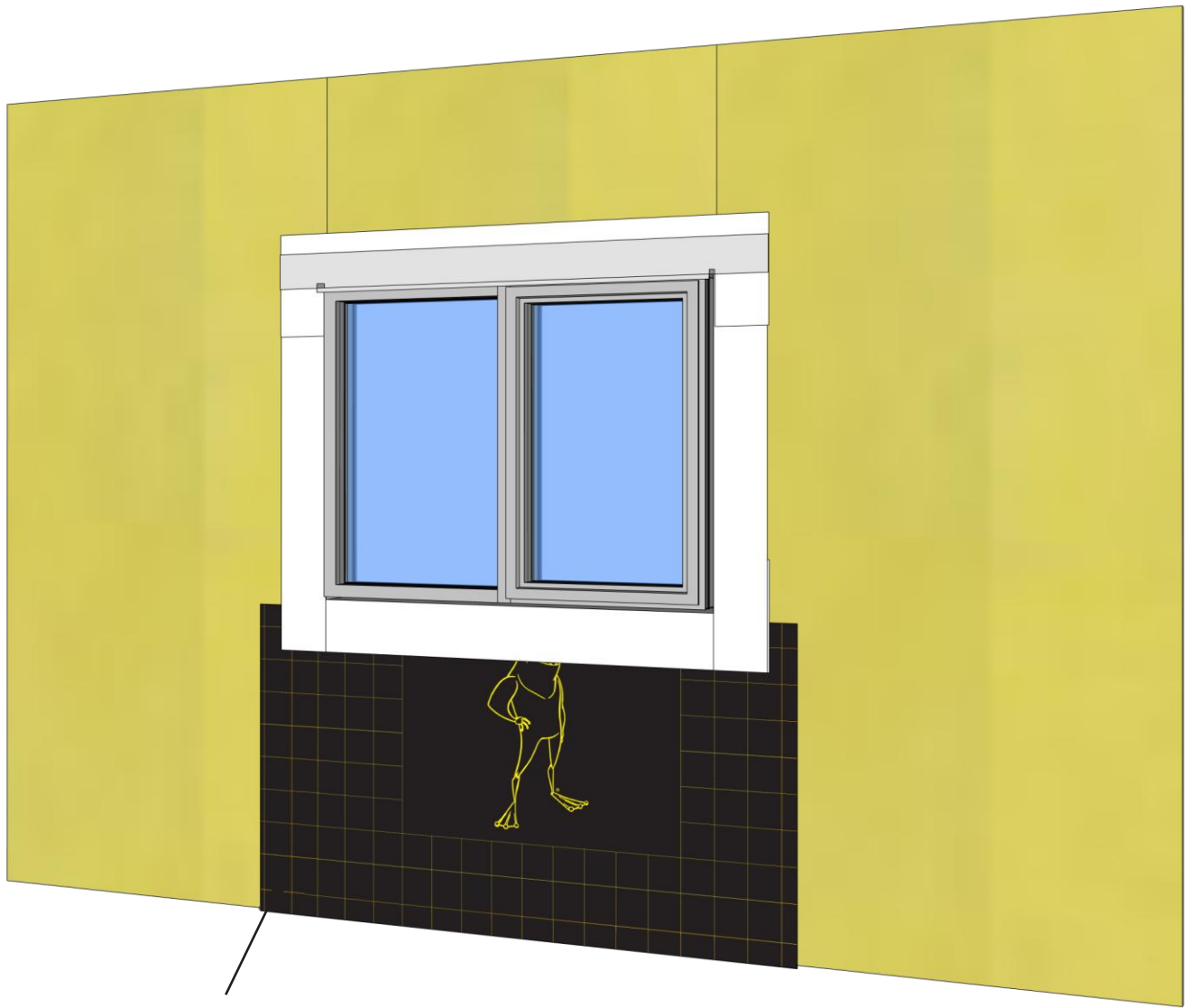
Detail sketch is generic, representing suggested best practices for VaproShield materials, and does not represent a specific job site condition and therefore may not be applicable to certain projects. Detail sketch is designed for use as a reference and must be approved by the designer/ consultant of record for each project prior to installation by the subcontractor. Changes and approvals of VaproShield details are the sole responsibility of the designer/consultant of record. VaproShield is **not** the designer of record for building enclosure details and takes no responsibility for the accuracy or interpretation of actual project site conditions.

DRAWN BY: AR

DATE: 3/2025

REF: 344

Always check [www.VaproShield.com](http://www.VaproShield.com) for the latest details and installation instructions



PanelShield SA SelfAdhered field membrane installed underneath 6" flap of VaproFlashing SA to create shingle effect

**PANELSHIELD**<sup>™</sup> SA

**VAPROFLASHING** SA<sup>™</sup>

**PRODUCT DESCRIPTION**

**PanelShield SA** is a vapor permeable, self-adhered water resistive barrier membrane that protects the building envelope by allowing vapor to pass through (breathable) but not air or liquid water

**VaproFlashing SA** is an air, water, and vapor barrier flashing with an aggressive pressure sensitive adhesive that does not require a primer

**DISCLAIMER**

Detail sketch is generic, representing suggested best practices for VaproShield materials, and does not represent a specific job site condition and therefore may not be applicable to certain projects. Detail sketch is designed for use as a reference and must be approved by the designer/ consultant of record for each project prior to installation by the subcontractor. Changes and approvals of VaproShield details are the sole responsibility of the designer/consultant of record. VaproShield is **not** the designer of record for building enclosure details and takes no responsibility for the accuracy or interpretation of actual project site conditions.

DRAWN BY: AR

DATE: 3/2025

REF: 344

Always check [www.VaproShield.com](http://www.VaproShield.com) for the latest details and installation instructions



PanelShield SA Self-Adhered field membrane installed with minimum 3" overlap

**PANELSHIELD™ SA**

**VAPROFLASHING SA™**

**PRODUCT DESCRIPTION**

**PanelShield SA** is a vapor permeable, self-adhered water resistive barrier membrane that protects the building envelope by allowing vapor to pass through (breathable) but not air or liquid water

**VaproFlashing SA** is an air, water, and vapor barrier flashing with an aggressive pressure sensitive adhesive that does not require a primer

**DISCLAIMER**

Detail sketch is generic, representing suggested best practices for VaproShield materials, and does not represent a specific job site condition and therefore may not be applicable to certain projects. Detail sketch is designed for use as a reference and must be approved by the designer/ consultant of record for each project prior to installation by the subcontractor. Changes and approvals of VaproShield details are the sole responsibility of the designer/consultant of record. VaproShield is **not** the designer of record for building enclosure details and takes no responsibility for the accuracy or interpretation of actual project site conditions.

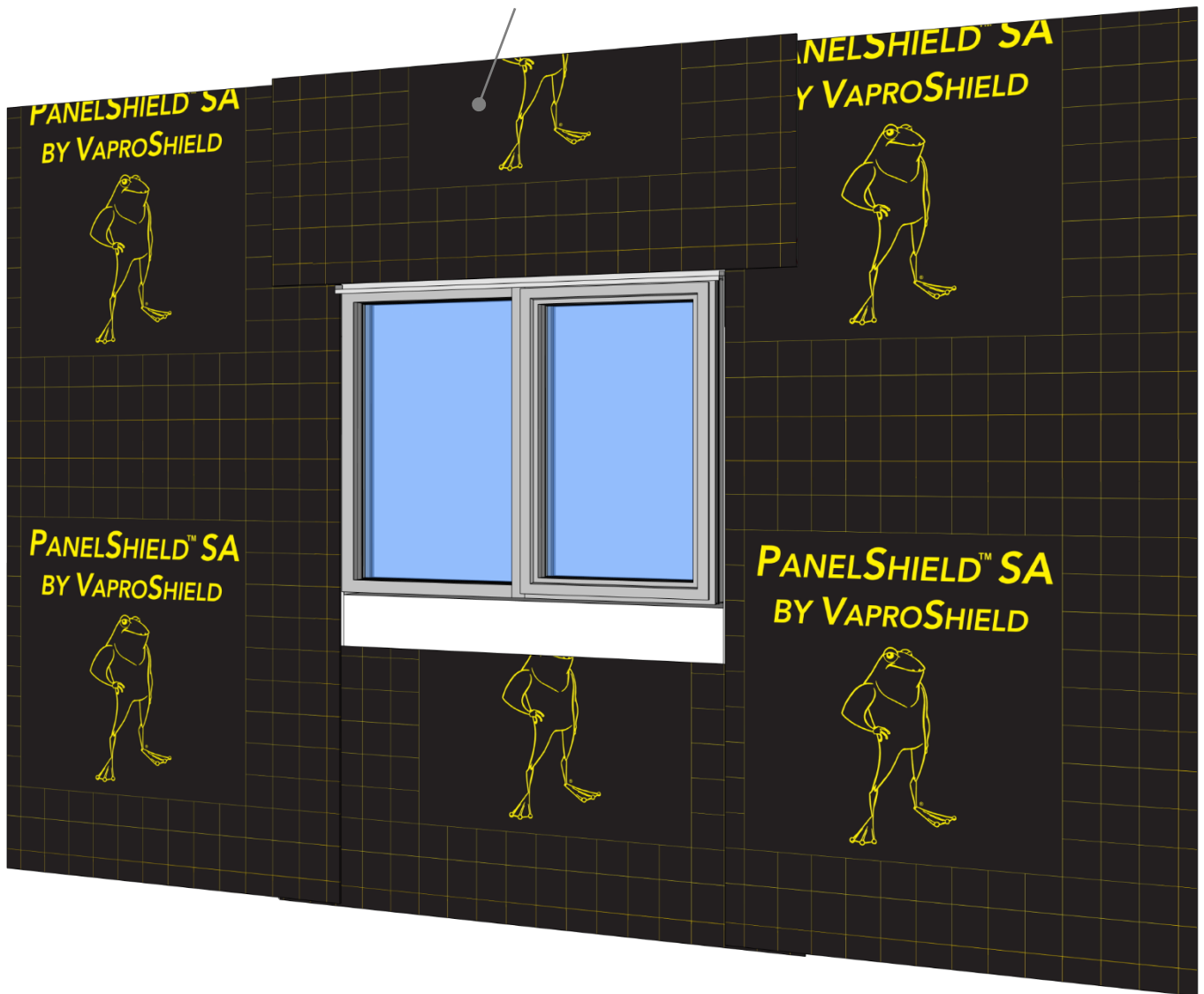
DRAWN BY: AR

DATE: 3/2025

REF: 344

Always check [www.VaproShield.com](http://www.VaproShield.com) for the latest details and installation instructions

PanelShield SA Self-Adhered installed over head flashing and VaproFlashing SA



**PANELSHIELD**<sup>™</sup> SA

**VAPROFLASHING** SA<sup>™</sup>

**PRODUCT DESCRIPTION**

**PanelShield SA** is a vapor permeable, self-adhered water resistive barrier membrane that protects the building envelope by allowing vapor to pass through (breathable) but not air or liquid water

**VaproFlashing SA** is an air, water, and vapor barrier flashing with an aggressive pressure sensitive adhesive that does not require a primer

**DISCLAIMER**

Detail sketch is generic, representing suggested best practices for VaproShield materials, and does not represent a specific job site condition and therefore may not be applicable to certain projects. Detail sketch is designed for use as a reference and must be approved by the designer/ consultant of record for each project prior to installation by the subcontractor. Changes and approvals of VaproShield details are the sole responsibility of the designer/consultant of record. VaproShield is **not** the designer of record for building enclosure details and takes no responsibility for the accuracy or interpretation of actual project site conditions.

DRAWN BY: AR

DATE: 3/2025

REF: 344

Always check [www.VaproShield.com](http://www.VaproShield.com) for the latest details and installation instructions