

Project Profile

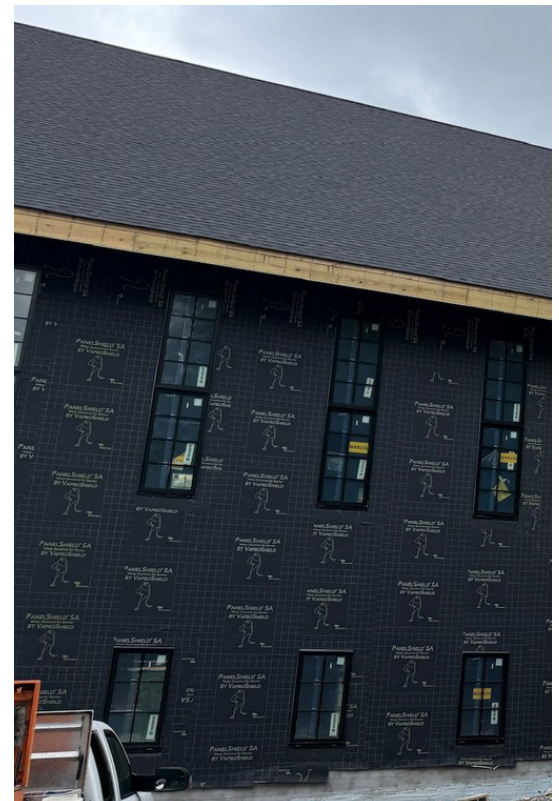
Wayside Church Addition | Signal Mountain, TN



The Wayside Church addition is a new construction expansion designed to seamlessly integrate with the existing facility. The project team selected a comprehensive VaproShield building enclosure system to create a continuous air barrier across multiple substrates while delivering effective moisture management throughout the building envelope.

A key element of the project was the use of VaproLiqui-Shield, VaproShield's fluid-applied air barrier membrane, applied directly over CMU walls. The fluid-applied application allowed the membrane to fully conform to the CMU surface, sealing irregularities, cracks, and transitions that are common with masonry construction. This approach provided a durable, continuous air barrier that simplified detailing and enhanced overall building envelope reliability.

PanelShield SA sheet membrane was installed over CDX plywood areas, delivering a compatible, vapor permeable air barrier that tied into VaproLiqui-Shield fluid-applied membrane. To support drainage and drying behind the exterior cladding, VaproShims were installed behind horizontal hat channels, creating a rainscreen cavity that will safely manage moisture through drainage, ventilation, and drying.





The Specifications

VaproShield Solution	PanelShield SA, VaproLiqui-Shield
Construction Type	Expansion
VaproShield Rep	MJ Dunlap & Associates
Architect	Franklin Architects www.franklinarch.com/
Contractor	New Blue Construction www.newblueconstruction.com/

